

THE INTERSECTION OF SUBSTANCE USE DISORDER, HUMAN TRAFFICKING AND RECOVERY HOUSING, II

ORH
2024

Autumn McCraw, CPRSS, Sur-thiver, Advocate
Community Engagement Coordinator
West Virginia Alliance of Recovery Residences

1

GOALS FOR THIS SESSION

- Intro to Human Trafficking
- Intersectionality of SUD and HT
- Intersectionality of Recovery Housing and HT
- Serving Survivors in Recovery Residences
- Resources

2



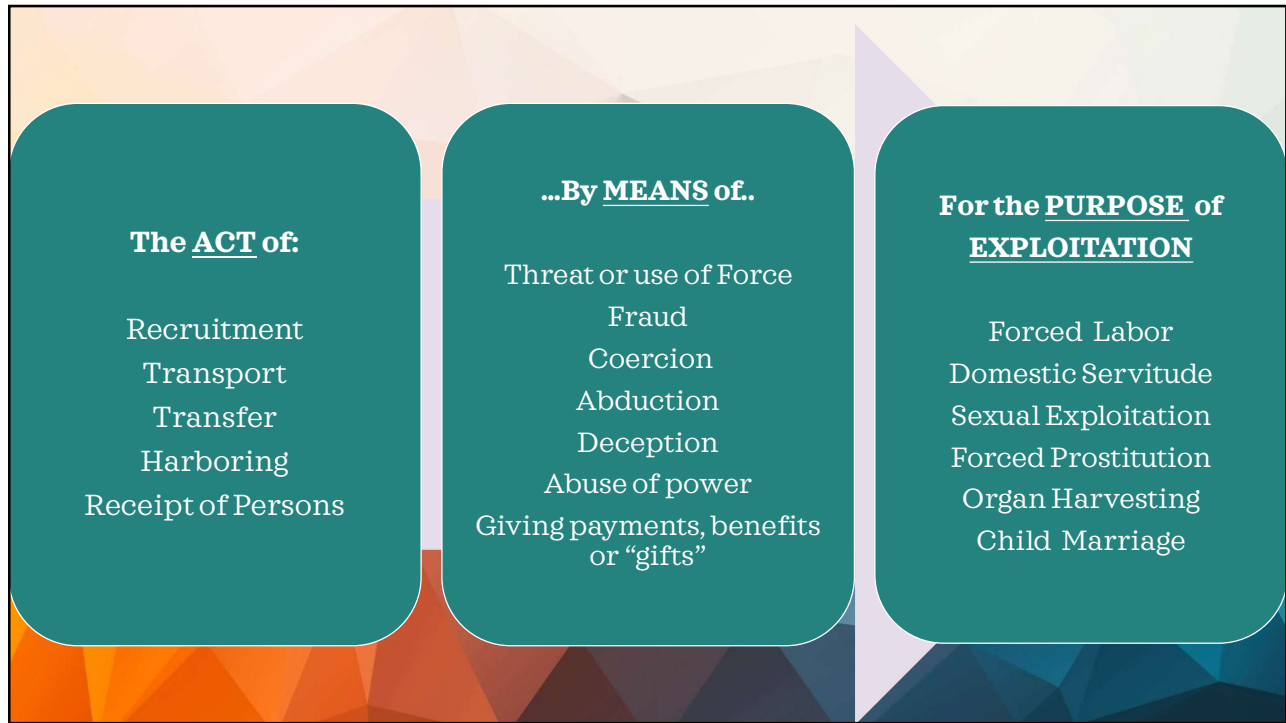
WHAT COMES TO YOUR MIND WHEN YOU
THINK OF HUMAN TRAFFICKING ?

3

WHAT IS HUMAN TRAFFICKING?

The Trafficking Victims Protection Act (TVPA) of 2000 defined human trafficking as the recruitment, transportation, transfer, harboring or receipt of persons by improper means (such as force, abduction, fraud, or coercion) for an improper purpose including forced labor or sexual exploitation.

4



5

TYPES OF HUMAN TRAFFICKING

LABOR TRAFFICKING-

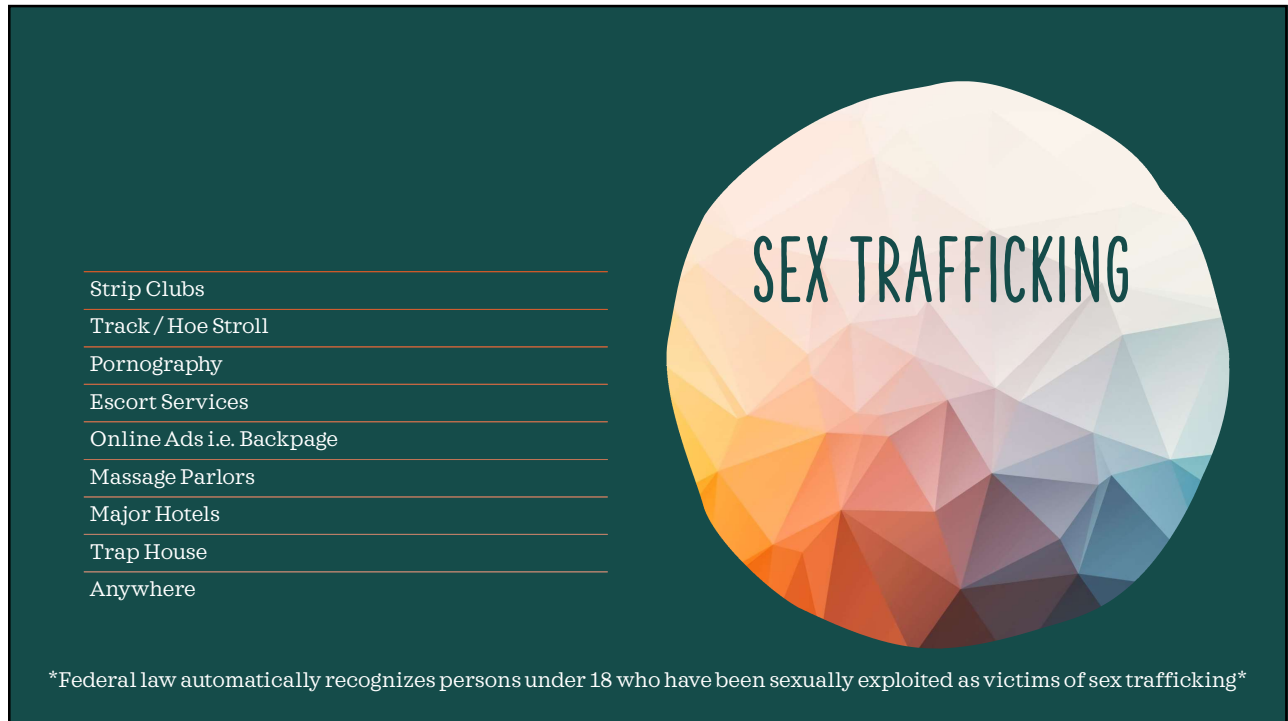
Compelling or inducing another to engage in labor, or recruiting, enticing, harboring or transporting another by providing drugs, withholding or destroying government documents, debt servicing, force, or a plan or pattern of coercive conduct.

SEX TRAFFICKING-

Profiting from sex work by providing drugs, using false or misleading statements, withholding or destroying government documents, debt servicing, force, a plan or pattern of coercive conduct, or other acts.

Check out the polarisproject.org to learn about the 25 typologies of human trafficking.

6



SEX TRAFFICKING

- Strip Clubs
- Track / Hoe Stroll
- Pornography
- Escort Services
- Online Ads i.e. Backpage
- Massage Parlors
- Major Hotels
- Trap House
- Anywhere

Federal law automatically recognizes persons under 18 who have been sexually exploited as victims of sex trafficking

7



LABOR TRAFFICKING

- Recovery Housing
- Traveling Sales Crew
- Panhandling
- Landscaping
- Agricultural
- Hair and Nail
- Hotels and Hospitality
- Construction
- Manufacturing
- Domestic Servitude
- Salons
- Health and Elder Care

8

HOW DOES HUMAN TRAFFICKING HAPPEN ?

Where there are vulnerable populations, there is exploitation.

9

Vulnerable Populations

Need for love
and
acceptance

LGBTQIA2s+

Substance Use

Age

Race

Foster Care/
Aging Out

Abuse

Runaway
/Houseless

Generational
Trauma

Bullying

Social Media /
Internet

Immigration
Status

10



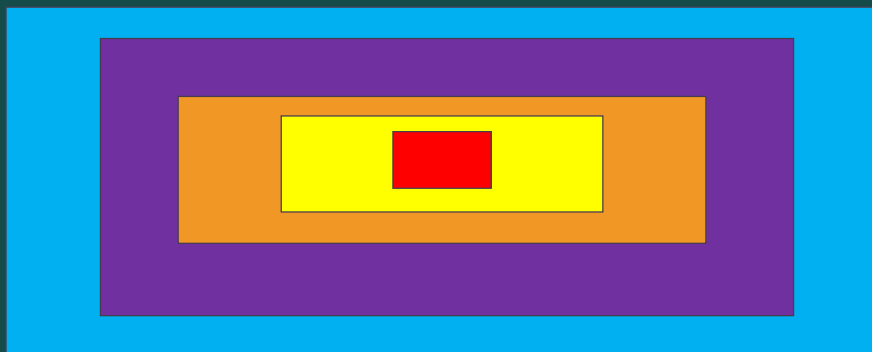
ANYONE

11

GROOMING : IS A GRADUAL EXPANSION OF BOUNDRIES

A systematic process that aims to achieve complete control over someone's identity or individuality using a combination of physical, mental, and emotional means.

IT DOES NOT HAPPEN OVERNIGHT



12



13

Brainwashing	Systematic effort to destroy an individual's former loyalties and beliefs and to substitute loyalty to a new ideology or power. It has been used by religious cults as well as by radical political groups. The techniques of brainwashing usually involve isolation from former associates and sources of information; an exacting regimen calling for absolute obedience and humility; strong social pressures and rewards for cooperation; physical and psychological punishments for noncooperation, including social ostracism, and criticism, deprivation of food, sleep, and social contacts, bondage, and torture; and constant reinforcement. Its effects are sometimes reversed through deprogramming which combines confrontation and intensive psychotherapy. (Concise encyclopedia)
Trauma Bonding	Is a term developed by Patrick Carnes, is the misuse of fear, excitement, sexual feelings, and sexual physiology to entangle another person. Many primary aggressors tend toward extreme behavior and risk taking, and trauma bonding is a factor in their relationships.
Stockholm Syndrome	The psychological tendency of a hostage to bond with, identify with, or sympathize with his or her captor
Identity Disturbances	Identity disturbance is used to describe an inconsistent or incoherent sense of self. It is associated with <u>borderline personality disorder</u> , as identity disturbance is one of the criteria for the condition. Identity disturbance often shows up as consistent and remarkable changes in a person's beliefs, values, and behaviors that significantly impact their life, such as difficulty in maintaining jobs or relationships.

14



MISIDENTIFICATION


HUMAN TRAFFICKING LOOKS DIFFERENT IN A *THIRD WORLD COUNTRY* THAN A *FIRST WORLD COUNTRY*, LIKE AMERICA



15

Misinformation

- Spread via movies, tv, social media
- #savethechildren
- Traffickers target people they don't know
- Adults and children are kidnapped
- Labor trafficking only happened to "undocumented persons"
- If a person "chooses" the lifestyle they weren't trafficked
- All sex workers are being trafficked



16

STIGMA IS REAL, LANGUAGE MATTERS

<u>STIGMATIC</u>	<u>PERSON CENTERED</u>
PROSTITUTE DIRTY THEIR CHOICE EASY SLUTTY DRUG ADDICT KNOWS WHAT THEY ARE DOING CRIMINAL LIKES SEX PRETTY WOMAN LOW LIFE THROW AWAY HOE STRIPPER DOPE WHORE	VICTIM HELPLESS EMPATHATIC SYMPATHY NO CHOICE TRICKED DUPED EXPLOITED NEEDS HELP TAKEN ADVANTAGE OF A PERSON / CHILD RAPED NO CHICE EXPLOITED ANY PERSON CONTEMPLATING RECOVERY

17

Why is this important ?

Treatment centers and recovery residences house survivors and victims that are actively being trafficked!

18

Substance Use Disorder substantially increases a person's vulnerability

Drug use has been initiated by traffickers as a means of coercion and control


When a victim has SUD and actively using, a trafficker does not need need to use violence as a means of control

SUD is a result of trafficking and Trafficking is a result of SUD

Substance Use Disorder and Human Trafficking

19

Trafficking of Persons with Disabilities in the United States



United States v. Paoletti-Lemus, et al., No. 1:97-cr-00768 (E.D.N.Y. 1998)

United States v. Kozminski, 487 U.S. 931 (1988)

United States v. Kaufman, 546 F.3d 1242 (2008)

Equal Employment Opportunity Commission v. Henry's Turkey Service, (2013)

The Human Trafficking Legal Center Bridge to Justice. (2018, October 16)
Photo Credit WRAL News. (2006, August 4). Scam victims were just trying to help

20

Recovery Residences and Labor Trafficking

21

According to a member of the National Sheltered Alliance, 100% of the residents of their "safe houses" identify with having SUD.

When entering recovery and / or coming out of incarceration, people are at their most vulnerable.

Some organizations use residents as an unpaid labor source to support their organization.

When looking to identify victims/survivors of HT, we don't need to look any further than our treatment centers and recovery residences.

Recovery
Housing
and
Human
Trafficking

22



23

- Voluntary
- No consequences for declining
- No favoritism /special privileges
- Equal opportunity for all residents
- Does not impact recovery goals
- Treated as other employment situations
- Wages are fair market value (or minimum wage)
- Arrangements are viewed as fair by other residents
- Has no affect recovery environment or moral of home
- Terminated work has no recriminations that impair recovery

Paid Work Agreements

(NARR Standard 1.A.2.g)

24



25



26

RED FLAGS

Mental health
 Extreme behavior
 Talks about a controlling person in their life
 Does not have ownership of important documents
 Can't give address
 Jail/Prison
 Inconsistencies in story
 DV
 Repeat homelessness
 Will not be seen alone
 Looks down when talking
 Oppositional / Defiant
 Wanting to shock or startle you
 Branding / Tattoos
 Consistent miscarriages
 Inserted foreign objects / stuck tampons
 Regular STD checks / verification of results
 Older "boyfriend"
 Expensive items
 Signs like domestic violence - hyper sexuality
 Purposeful pregnancy by "boyfriend"



27

Resources for Evaluation and Education

- Vera Institute Human Trafficking Tool
- National Human Trafficking Training and Technical Assistance Center, Adult HT Tool Kit and Guide
- National Human Trafficking Training and Technical Assistance Center, How to Build Survivor Informed Organizations
- Polaris Project Typology of Modern-Day Slavery

28

28

BEFORE YOU BEGIN

Am I trained / experienced?

Do I have a trusting relationship with this person?

Do I have resources for this person?


Can I help develop a safety plan?

Am I trained on anti-stigmatic language?

Am I prepared to care for this person after they open up?

Can I take care of myself?

Am I ready to just listen?



29

Common Survivorship Issues

Physical

- General Bodily Harm
- Injury from abuse, exhaustion
- Reproductive harm
- STI's, pregnancy, sterilization, genital mutilation

Emotional

- Fear, Anxiety
- Guilt, Shame
- Mistrust, Betrayal
- Anger, Irritability
- Dissociation
- Little emotional regulation
- Dissociation, Flashback
- Nightmares, Panic Attacks
- Denial, Shock
- Numbness, Detachment
- Trauma Bonding/Traumatic Attachment

Behavioral

- Avoidance
- SUD
- Disordered Eating
- Sleep Issues
- Self Harm, Risk Taking, Suicidally
- Money Management Skills
- Parenting Support Help

(Gerassi et Al, 2021; Hodge, 2023, Manraig, 2021; Tracey, 2022)

30

- 10) Education or job training.
- 9) Navigating shame and stigmatization for being exploited
- 8) Relationship repair with safe friends and family
- 7) Accessing quality, trauma informed medical care.
- 6) Accessing a healthy supportive community
- 5) Getting a job that is a good fit
- 4) Getting a stable, living wage job
- 3) Safe a safe place to stay
- 2) Finding trustworthy people
- 1) Behavioral / mental health services with qualified providers

Needs At Exit

POLARIS 2023, IN HARM'S WAY: HOW SYSTEMS FAIL HUMAN TRAFFICKING SURVIVORS

31



32

Supportive Theories and Therapies

<ul style="list-style-type: none"> • Person-Centered • Polyvagal Theory • Emotion Focused Therapy • EDMR • Body-Focused /Somatic Therapy <ul style="list-style-type: none"> • art/dance/movement/yoga • Mindfulness -Based Therapy • Internal Family Systems 	<p>Peer Suggested:</p> <ul style="list-style-type: none"> • Animal-Assisted Therapies (Whoeler and Akers, 2022) • Object-Relations Family Theory (Rocha, 2020) • Relational-Cultural Therapy (Herchberger, 2021)
---	---

(Capous-Desyllas & Goulah-Pabst, 2022; D'Amo, 2022; Gerassiet Al; Monroig, 2021)

33



Most Valuable and Most Harmful Supports At Exit



Most Harmful Sources of Support		Most Valuable Sources of Support
Intimate partner(s)		My own resourcefulness
Family		Counseling/therapy
A faith community (for example, church, mosque, temple, synagogue, etc.)		Other survivors who experienced similar exploitation and understand what I was going through
Help from service provider/non-profit organization that is faith-based		Hobbies (music, art, etc.)
My employer/my job		Support from an advocate
Internet, social media, listservs		Support groups
Friends (including chosen family)		Help from service provider/non-profit organization that is not explicitly faith-based
Support from a government agency		Help from service provider/non-profit organization that is faith-based
Help from service provider/non-profit organization that is not explicitly faith-based		A faith community (for example, church, mosque, temple, synagogue, etc.)
Other survivors who experienced similar exploitation and understand what I was going through		Friends (including chosen family)

POLARIS 2023, IN HARM'S WAY: HOW SYSTEMS FAIL HUMAN TRAFFICKING SURVIVORS

34

Protocol Response: Wrap Around Services

- Trauma focused therapy
- Creative Therapy
- Survivor mentorship
- Individual case management
- Economic Empowerment Focus
- Think outside the box!!

35

THERE'S NO COOKIE CUTTER WAY TO HELP OR WORK WITH VICTIMS/SURVIVORS.

We want this

But often get this

THERE ARE MANY AVENUES THAT WILL REACH THE SAME DESTINATION

*HUGE NEED FOR WRAP AROUND SERVICES

36

Compassion is not a relationship between the healer and the wounded. It's a relationship between equals. Only when we know our own darkness well, can we be present with the darkness of others. Compassion becomes real when we recognize our shared humanity.

-Pema Chodron

37

Re-Defining Advocacy for Victims of HT

RESPECT PRIVACY

PROMOTE ON AND OFF CAMPUS RESOURCES

ADVOCACY

BELIEVE AND VALIDATE THEIR EXPERIENCE

ACKNOWLEDGE INJUSTICE

RESPECT THEIR AUTONOMY

HELP THEM MAKE A PLAN

Advocacy is an activity by an individual or group which aims to influence decisions within political, economic, and social systems and institutions. A great advocate will seek to lift-up and empower their client.

38

Resource List

- NATIONAL HUMAN TRAFFICKING HOTLINE
1-888-373-7888
www.humantraffickinghotline.org
- WV COALITION AGAINST DOMESTIC VIOLENCE www.wvcadv.org
- SHARED HOPE INTERNATIONAL
www.sharedhope.org
- ENDING THE GAME
www.endingthegame.com
- Elevate Academy
- THE AVERY CENTER
- Survivor Leadership Institute
- THORN www.wearethorn.org
- FIGHT THE NEW DRUG
www.fightthenewdrug.org
- WV HUMAN TRAFFICKING TASK FORCE
www.stophumantraffickingwv.org
- The National Sheltered Alliance - resource guide
- Domestic Violence: 24-hour Hotline: 1-800-799-SAFE (7233)
- Sexual Abuse: 24-hour Hotline: 1-800-656-4673
- Suicide: 24-hour Hotline: 1-800-273-TALK (8255)
- Dating Violence: 24-hour Hotline: 1-866-331-9474
- Runaway and Homeless Youth: 24-hour Hotline: 1-800-RUNAWAY (786-2929)
- Missing Children and Child Pornography:
National Center for Missing and Exploited Children 24 hour Hotline: 1-800-THE-LOST (843-5678)
- YOUR STATE HT TASK FORCE
- The Polaris Project

39

THANK YOU!

Autumn McCraw
(304) 989-0388

autumn@wvarr.org

consult.autumn@gmail.com

40